



Intelligent AI auto-tracking.

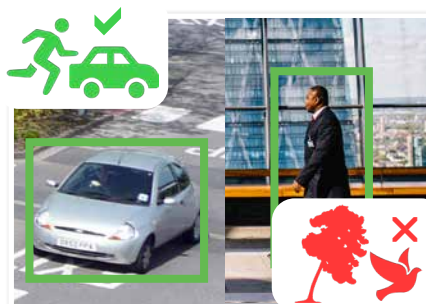
PTZ AI Series: AI perimeter protection PTZ domes in 2.0MP, 4.0MP & 8.0MP

Offer a versatile surveillance experience and ensure all areas are covered with up to 32x optical zoom, auto-tracking and fast endless 360° panning. Experience impressive AI powered video analytics and filter false alarms with AI face detection and AI Perimeter Protection technology, providing meaningful video event notifications in real-time.

- Stream up to 8.0MP (3840 x 2160) at 25fps
- Up to 32x optical zoom; Identify faces from up to 300m
- Low light colour performance at 0.005lx; 150m IR
- Endless 360° panning and -15° ~ 90° tilt adjustable
- MicroSD card slot for edge recording applications
- Perimeter Protection to identify people & vehicles
- Combine Perimeter Protection with Tripwire/Intrusion to prevent false alarms, all using any VIP Vision NVR
- Power by PoE+ (802.3at) or 24VAC (PSU included)
- IP67 weather rated, lightweight dome housing






Up to 4K Ultra HD Resolution

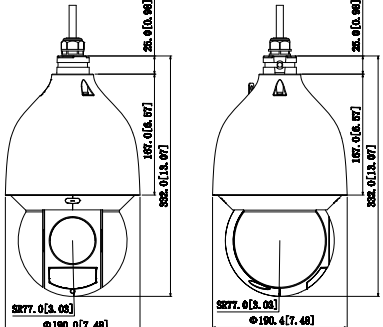


Smart Person & Vehicle Detection



Up to 32x Lossless Optical Zoom

Specifications		2.0MP 25x Zoom AI PTZ	4.0MP 32x Zoom AI PTZ	8.0MP 25x Zoom AI PTZ	
Model	Product Image				
	Ordering Information	VSIPPTZ-2IRP-I	VSIPPTZ-4IRP-I	VSIPPTZ-8IRP-I	
Camera	Image Sensor	1/2.8" 2.0MP Starvis™ CMOS	1/2.8" 4.0MP Starvis™ CMOS	1/1.8" 8.0MP Starvis™ CMOS	
	Effective Pixels	1920 (H) x 1080 (V)	2560 (H) x 1440 (V)	3840 (H) x 2160 (V)	
	RAM / ROM	1GB / 4GB		2GB / 8GB	
	Min Illumination	0.005 Lux/F1.6 (Colour), 0.0005 Lux/ F1.6 (B/W)/, 0 Lux (IR Light On)	0.005 Lux/F1.35 (Colour), 0.0005 Lux/ F1.35 (B/W)/, 0 Lux (IR Light On)	0.005 Lux/F1.6 (Colour), 0.0005 Lux/ F1.6 (B/W)/, 0 Lux (IR Light On)	
Infrared System	4 x Infrared LED, 150m range, Zoom Prio/Auto/Manual/Smart IR On/Off control				
Lens	Lens / Iris	5.4mm ~ 135mm F1.6 ~ F3.5 Motorised Lens	4.9mm ~ 156mm F1.35~ F4.4 Motorised Lens	5.4mm ~ 135mm F1.6 ~ F4.0 Motorised Lens	
	Field of View	58.7° ~ 3.1° (H), 33.2° ~ 1.7° (V), 67.3 ~ 3.9° (D) (25x Optical Zoom)	61.6° ~ 2.1° (H), 35.1° ~ 1.3° (V), 68.2 ~ 2.5° (D) (32x Optical Zoom)	61.6° ~ 3.6° (H), 35.7° ~ 2° (V), 66.6 ~ 4° (D) (25x Optical Zoom)	
	Focus	Auto/Semi-Auto/Manual / 0.1m ~ 1.5m Min. Focus Distance		Auto/Semi-Auto/Manual / 0.5m ~ 7m Min. Focus Distance	
DORI	Detect (25px/m)	1655m	3120m	2700m	
	Observe (63px/m)	657m	1232m	1066m	
	Recognise (125px/m)	331m	624m	540m	
	Identify (250px/m)	166m	312m	270m	
PTZ	Pan / Tilt Range	Pan: 0° ~ 360° (endless) / Tilt: -15° ~ 90° / Auto Flip 180°			
	PTZ Speed	Preset: Pan: 400°/s; Tilt: 300°/s Manual: Pan: 300°/s; Tilt: 200°/s			
	Modes / Presets	Up to 300 presets / 5 Pattern, 8 Tour, 5 scanning, Auto Pan, Auto Scan			
	Start-up Action	Auto-restore to previous PTZ/lens status			
Auto Tracking	Support				
Video	Resolution	1080p (1920 x 1080) to CIF (352 x 288)	4.0MP (2560 x 1440) to CIF (352 x 288)	8.0MP (3840 x 2160) to CIF (352 x 288)	
	Frame Rate	Main	1080p (1 ~ 50fps)	4.0MP (1 ~ 25fps)	8.0MP (1 ~ 25fps)
		Sub		D1 (1 ~ 25fps)	
		Third	1080p (1 ~ 25fps)	720p (1 ~ 25fps)	1080p (1 ~ 25fps)
	Video Compression	H.265+ / H.265 / H.264+ / H.264 / MJPEG	H.265+ / H.265 / H.264+ / H.264 / H.264H / MJPEG	H.265+ / H.265 / H.264+ / H.264 / MJPEG	
	Bit Rate	H.265/H.264: 3 ~ 20480Kbps		H.265/H.264: 32 ~ 8192Kbps	
	Bit Rate Control	Constant bit rate (CBR) / Variable bit rate (VBR)			
	Day/Night	Auto (ICR) / Color / B&W			
	Lighting Compensation	BLC / HLC / WDR (120dB)			
	White Balance	Auto / Indoor / Outdoor / Tracking / Manual / Sodium lamp / Natural light / Street lamp			
	Gain Control	Auto / Manual			
	Noise Reduction	2D / 3D DNR			
Picture Control	Flip 0°/180°				
IVS	Intelligent Functions	Abandoned/Missing Object, Motion Detection, Region of Interest, Electronic Image Stabilisation, Privacy Masking (24 zones), Defog			
	Perimeter Protection	Tripwire & Intrusion (Add recognition of humans & vehicles)			
	Intelligent Search	Via NVR Smart Search, Search tripwire/intrusion events by people or vehicle			
	SMD+	Filter motion detection alarms, recognises humans and vehicles from other moving objects			
Metadata	Supports human, motor vehicles and non motor vehicle search. Supports face image capture and footage search by face image & facial attributes				
Network	Ethernet	RJ-45 (10/100Base-T)			
	Protocol	IPv4; IPv6; HTTP; HTTPS; 802.1x; Qos; FTP; SMTP; UPnP; SNMPv1/v2c/v3 (MIB-2); DNS; DDNS; NTP; RTSP; RTP; TCP; UDP; IGMP; ICMP; DHCP; PPPoE; ARP; RTCP			
	Streaming Method	Unicast / Multicast			
	Max. User Access	20 Users			
Audio Interface	1 Input / 1 Output / Compression: G.711A; G.711Mu; G.726; AAC; G.722.1; G.723; G.729; PCM; MPEG2-Layer2				
Alarm Interface	2 Inputs / 1 Output				
RS485	N/A				
Edge Storage	FTP; Micro SD card (256G); P2P				
Interoperability	ONVIF Profile S&G&T; CGI				
Environmental	Power Supply	24VAC/3A (±25%) / PoE+ (802.3at)		<11W / <20W (IR on)	
	Power Consumption	<8W / <20W (IR on)	<12W / <20W (IR on)	<11W / <20W (IR on)	
	Operating Conditions	-40° ~ +70° C / Less than 95% RH			
	Ingress Protection	IP67			
	Vandal Resistance	IK10			
	Surge Protection	TVS 6000V Lightning Protection / Surge Protection			
	Housing	Metal			
	Dimensions	Ø190mm x 332mm			
Net Weight	4.7kg				

Application					
		Wall Mount	Pole Mount	Ceiling Mount	Parapet Mount
	VSBKTB305W		VSBKTB305W + VSBKTA150		
	VSBKTB305W + VSBKTA120			VSBKTA111 + VSBKTB300C + (+ VSBKTA112/13 optional extension)	VSBKTA111 + VSBKTB3035 +
	VSBKTB305W + VSBKTA140		VSBKTA111 + VSBKTB300C + VSBKTA150		